

ASSEMBLY INSTRUCTIONS

LLPA, LLPUA, DLLPA LOCKING LADDER PULL ASSEMBLY



2503 E. Vernon Avenue, Los Angeles, CA 90058-1826
(800) 421-6144 Fax (800) 262-3299
crlaurence.com

ABOUT THIS MANUAL

The procedures covered in this manual are not needed for regular installations. This manual covers the procedures needed to paint Ladder Pull Handles. Please store screws and internal mechanisms in a safe place until you are ready to reassemble. Refer to the 11M0189 Locking Ladder Pull Installation Manual to install the reassembled handles onto your door.

NOTE: LLPA shown. LLUPA and DLLPA similar

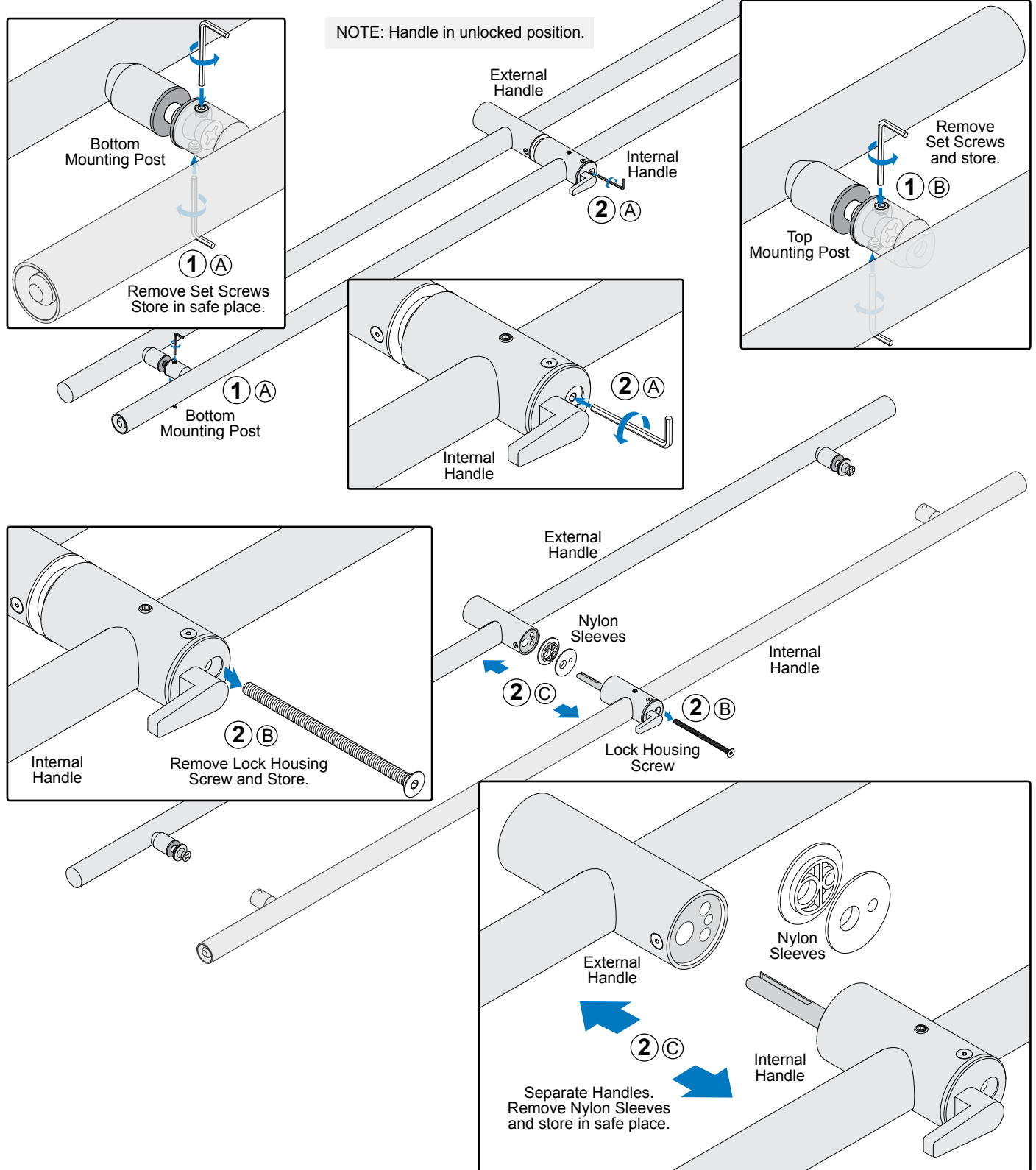
TABLE OF CONTENTS

ABOUT THIS MANUAL	2
DISASSEMBLE HANDLE	3 - 5
Separate Interior and Exterior Handles	3
DISASSEMBLE INTERIOR HANDLE	4
Remove Cam and Thumb Turn	4
Remove Bottom Mounting Post, Internal Housing and Transmission Cover	4
DISASSEMBLE EXTERIOR HANDLE	5
Remove Bottom Mounting Post	5
Remove Lock Cylinder	5
ASSEMBLE INTERNAL HANDLE	6 - 9
Install Internal Housing	6
Test and Adjust Internal Housing	7
Install Thumb Turn	8
Secure Internal Housing to Tube	9
Install Bottom Mounting Post	9
Install Cam	9
ASSEMBLE EXTERNAL HANDLE	10
Install Lock Cylinder	10
Install Bottom Mounting Post	10

DISASSEMBLE HANDLE

Separate Interior and Exterior Handles

- 1 Remove Set Screws at Interior Top and Bottom Mounting Posts.
- 2 Remove Interior Handle Lock Housing Screw and separate handles.



DISASSEMBLE INTERIOR HANDLE

Remove Cam and Thumb Turn

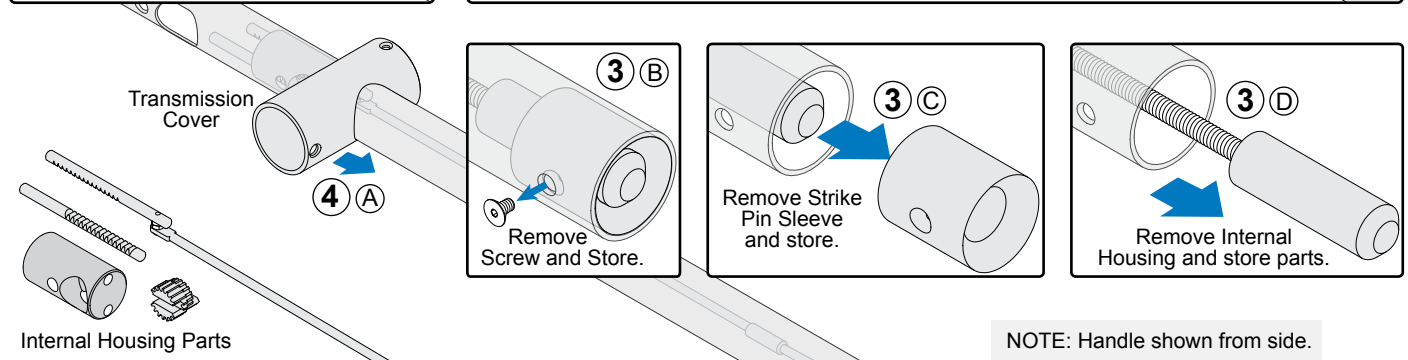
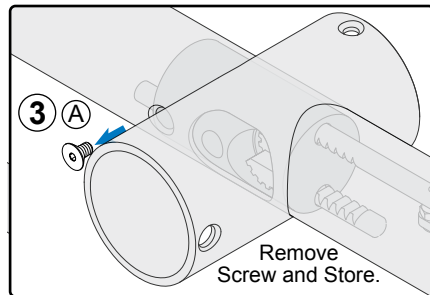
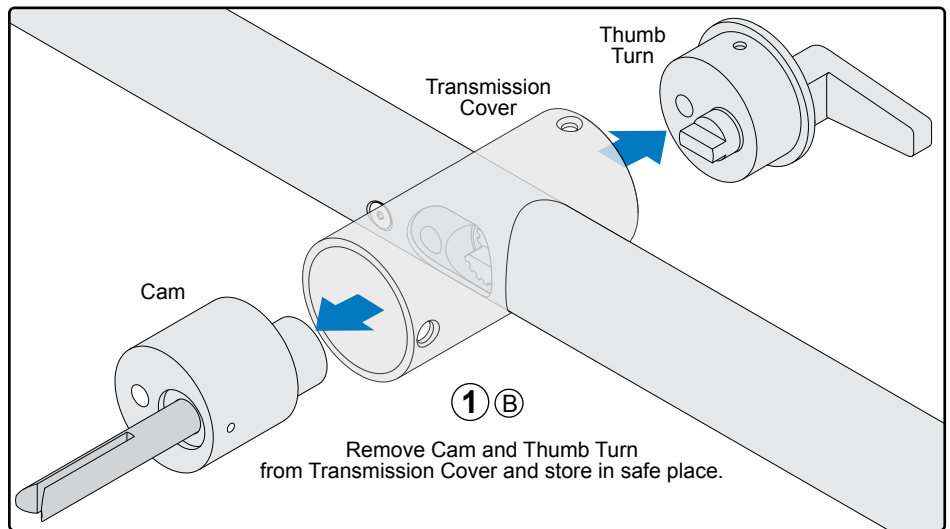
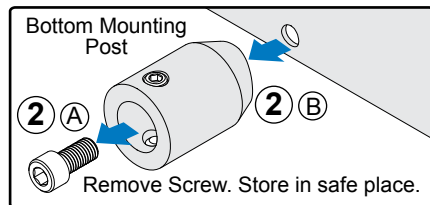
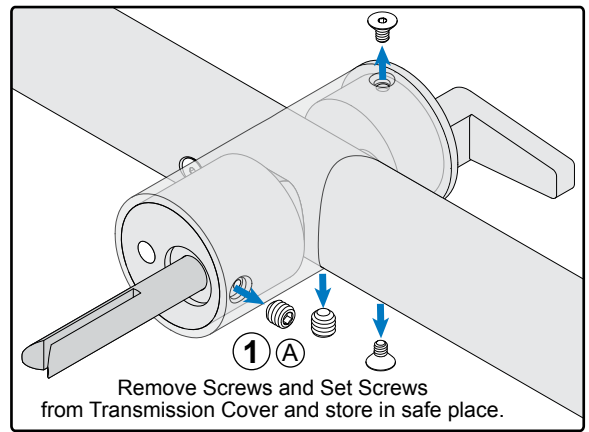
① Remove Cam and Thumb Turn.

Remove Bottom Mounting Post, Internal Housing and Transmission Cover

② Remove Bottom Mounting Post.

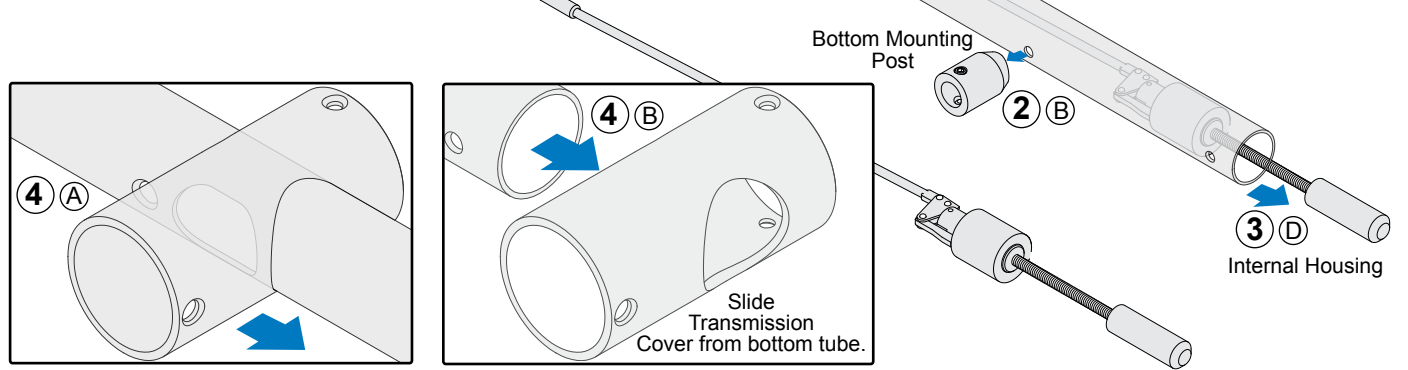
③ Remove Strike Pin Sleeve and Internal Housing

④ Remove Transmission Cover.



NOTE: Handle shown from side.

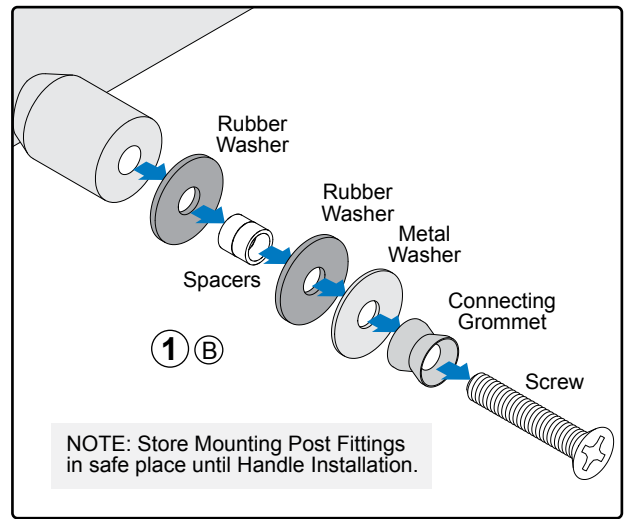
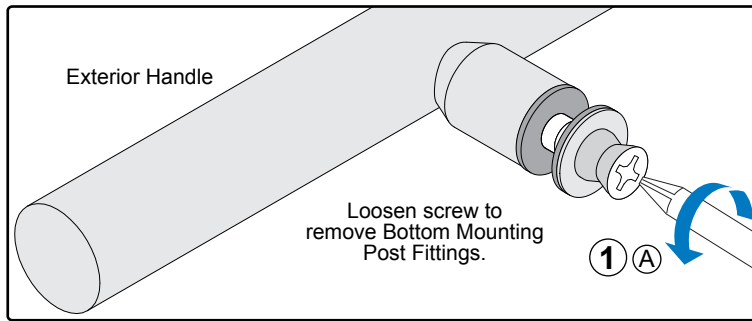
NOTE: Store Screws, Strike Pin Sleeve and Internal Housing Parts in a safe place until Handle Installation.



DISASSEMBLE EXTERIOR HANDLE

Remove Bottom Mounting Post

① Remove Bottom Mounting Post.

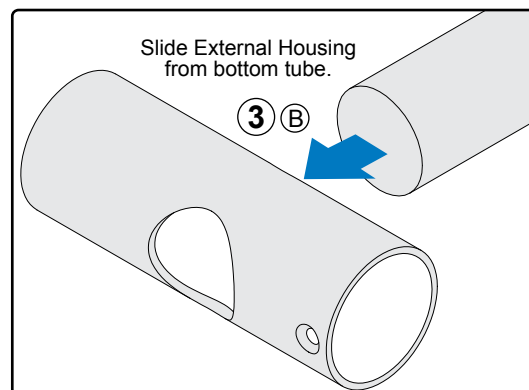
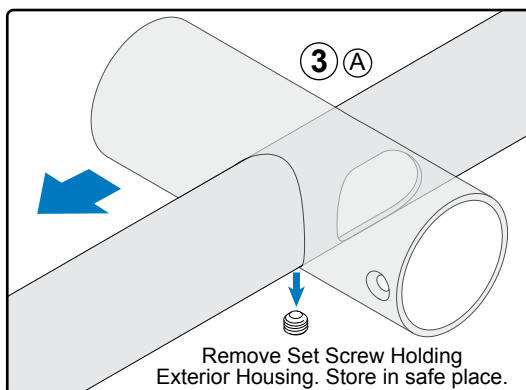
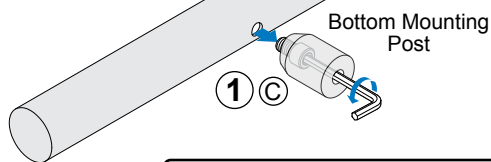
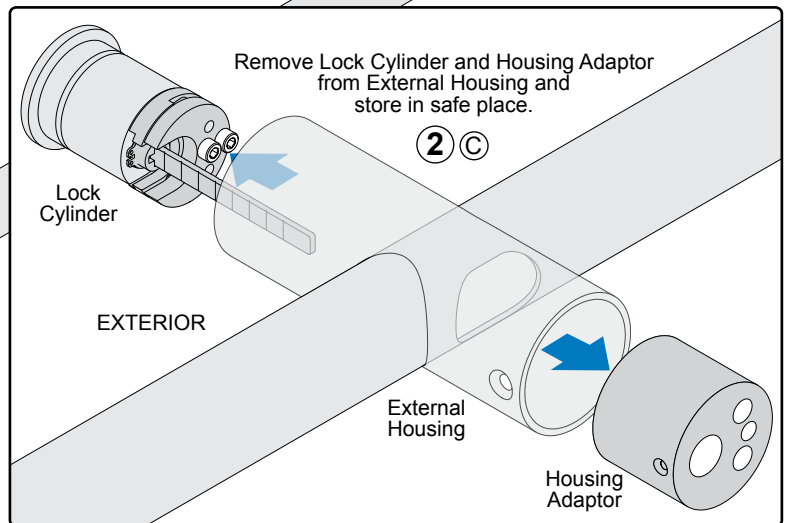
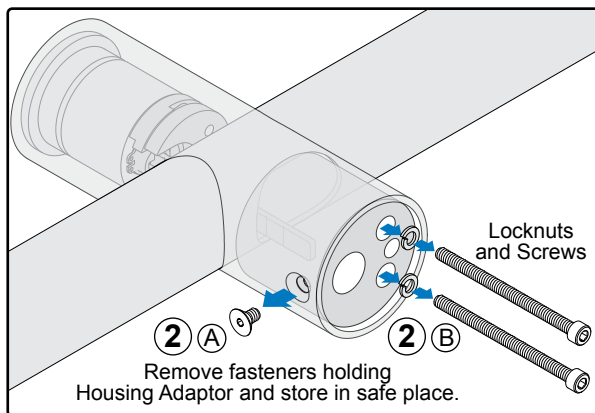
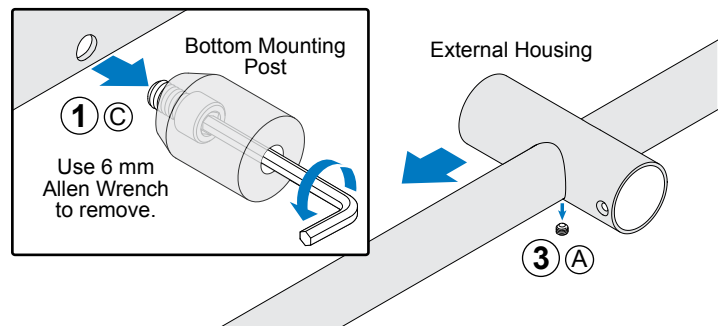


NOTE: Handle shown from side.

Remove Lock Cylinder

② Remove Lock Cylinder from External Housing.

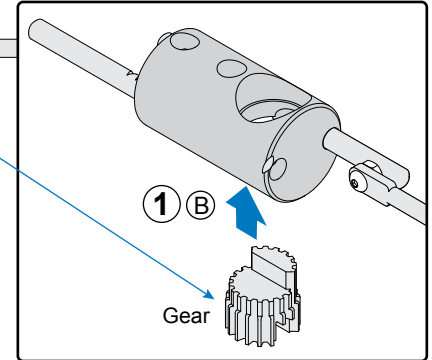
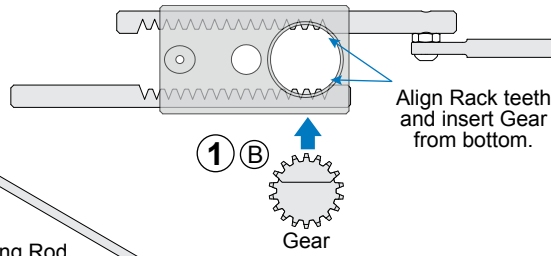
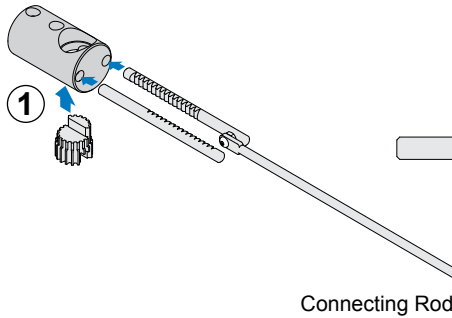
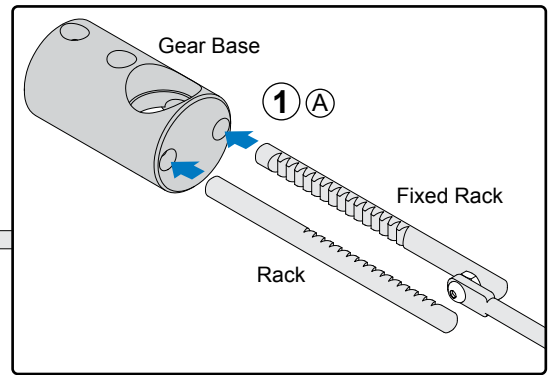
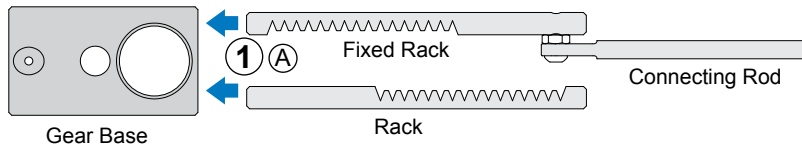
③ Slide External Housing to tube and remove.



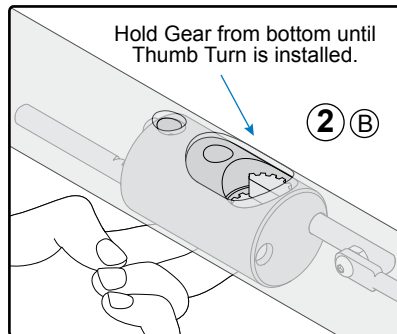
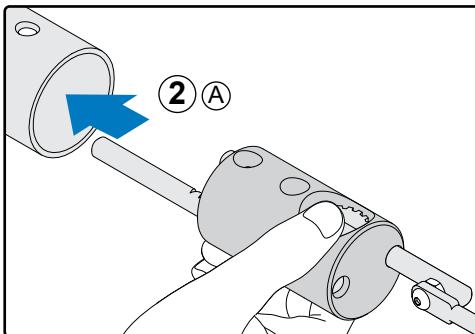
ASSEMBLE INTERNAL HANDLE

Install Internal Housing

① Assemble Internal Housing.

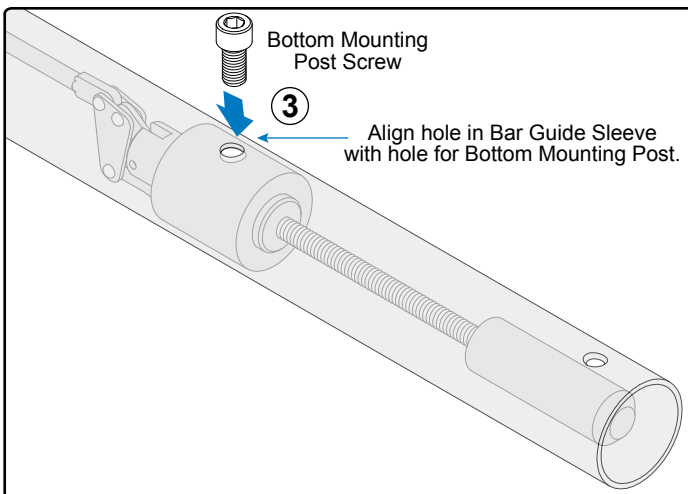


② Hold Gear in Base and push Internal Housing into bottom of tube.
NOTE: When Gear reaches cutout, hold Gear from bottom until housing is aligned and secured.



Bar Guide Post

③ Temporarily hold Internal Housing at bottom tube with Bottom Mounting Post Screw.

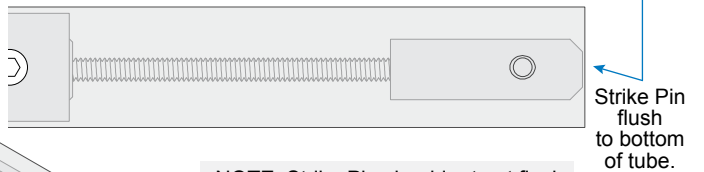
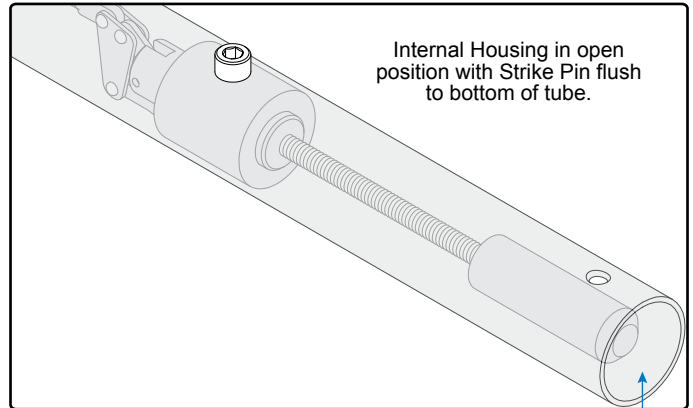
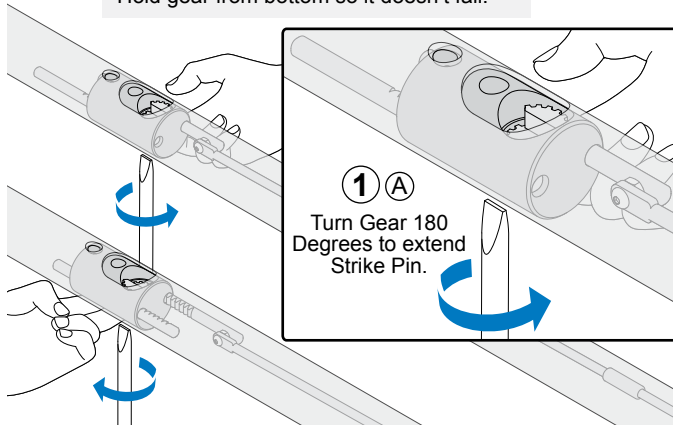


ASSEMBLE INTERNAL HANDLE (CONTINUED)

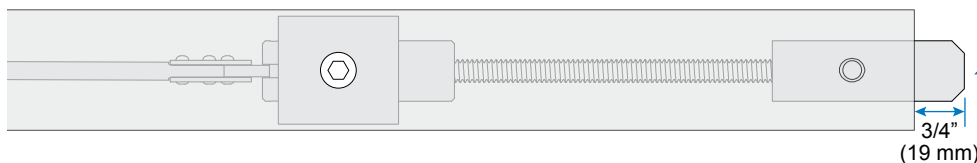
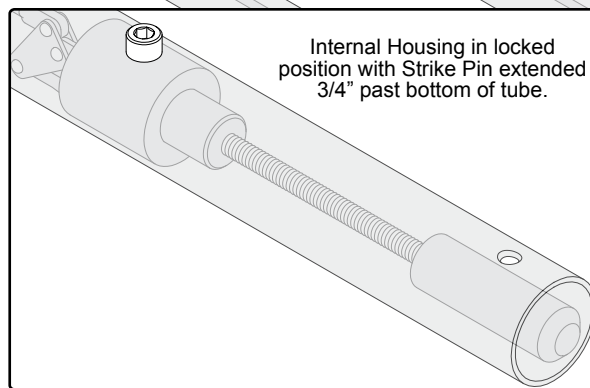
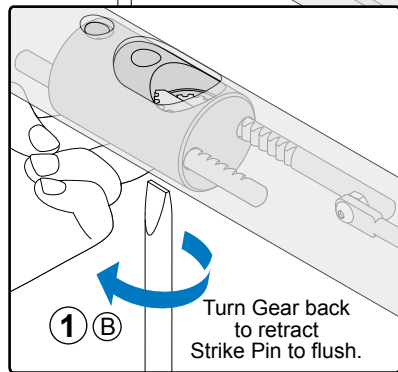
Test and Adjust Internal Housing

- 1 Turn Gear 180 degrees to move Strike Pin from flush to 3/4" (19 mm) past bottom of tube.

NOTE: Use a flat head screwdriver to test. Hold gear from bottom so it doesn't fall.

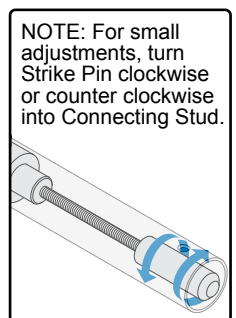
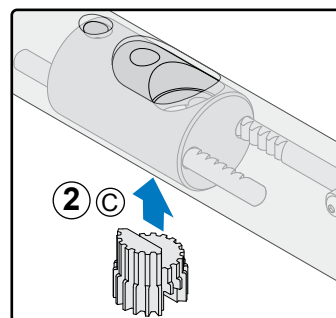
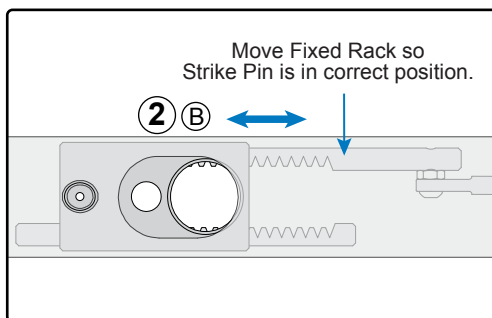
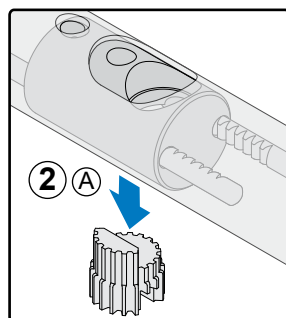


NOTE: Strike Pin should retract flush to bottom of tube when Gear turns.



NOTE: Strike Pin should extend 3/4" past bottom of tube when Gear turns.

- 2 To make adjustments, remove the Gear and move the Fixed Rack. Insert the Gear and repeat Step 1 above to test again. When Internal Housing is properly set, proceed with next step.



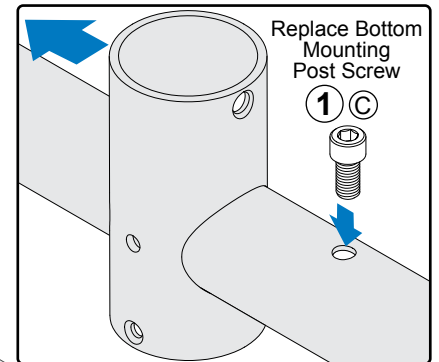
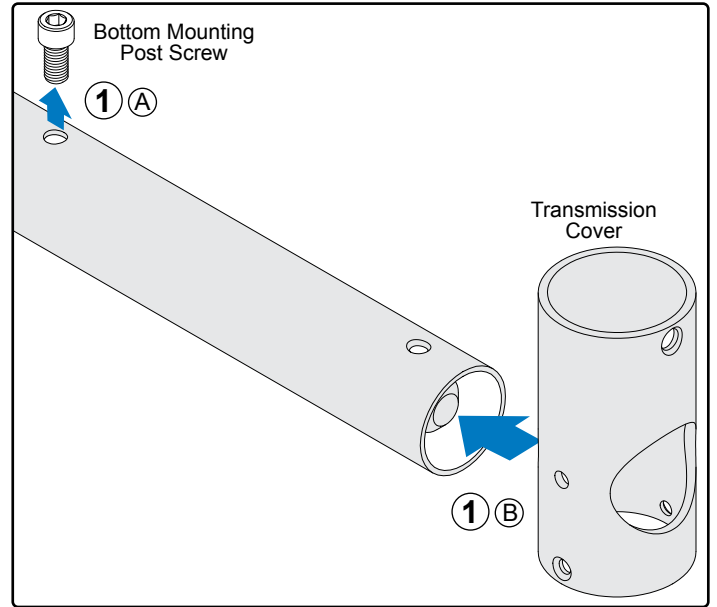
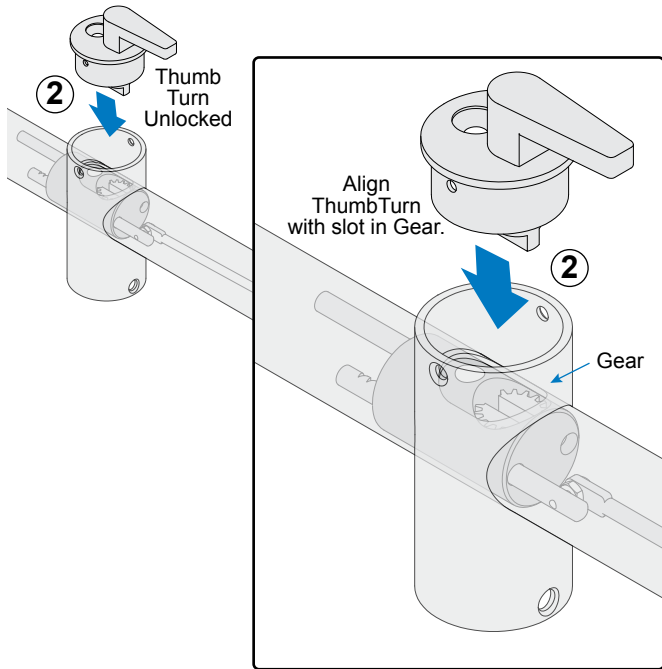
ASSEMBLE INTERNAL HANDLE (CONTINUED)

Install Thumb Turn

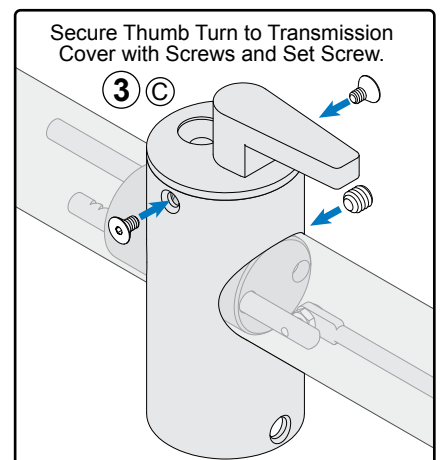
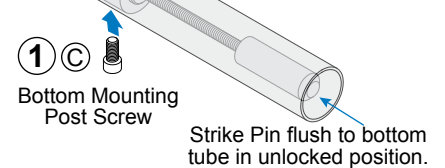
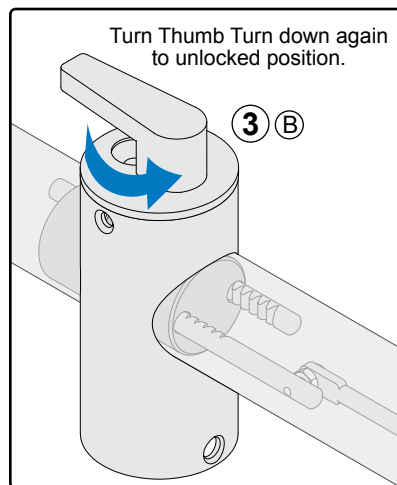
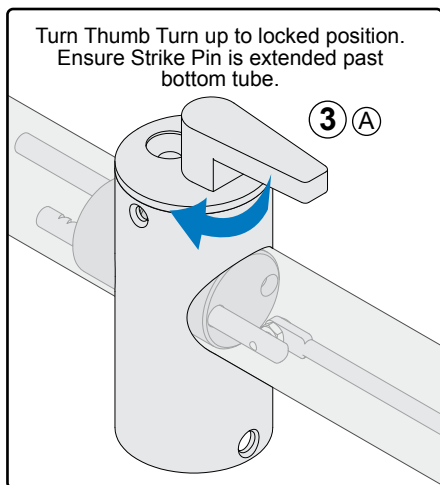
- 1 Remove Bottom Mounting Post Screw to slide Transmission Cover onto tube and then reinstall.

NOTE: Hold gear from bottom so it doesn't fall.

- 2 Turn Handle over and center Internal Housing over cutout in tube. With Internal Housing and Thumb Turn in unlocked position align with Gear.



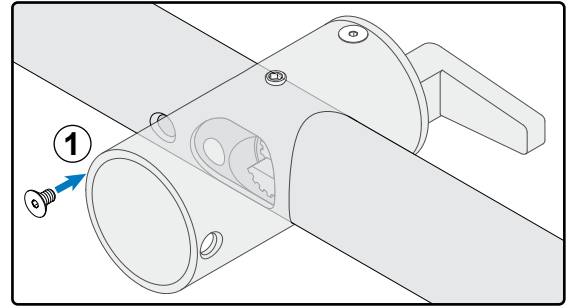
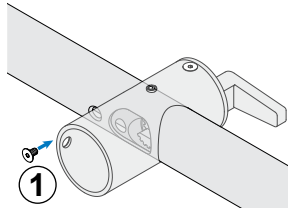
- 3 Hold in position and test mechanism.
NOTE: If it doesn't turn easily, go back to previous steps and adjust.



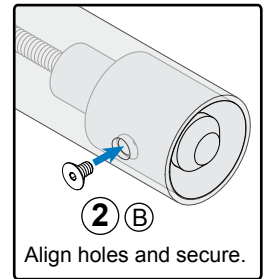
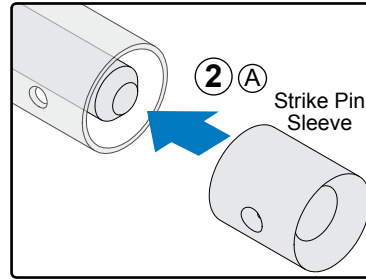
ASSEMBLE INTERNAL HANDLE (CONTINUED)

Secure Internal Housing to Tube

- ① Install Screw at top of Internal Housing.
- ② Install Strike Pin Sleeve at bottom tube.

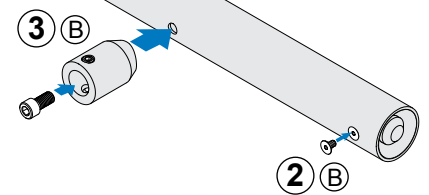
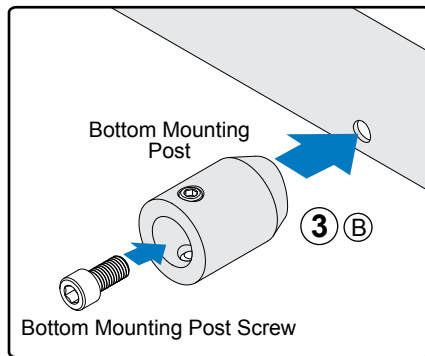
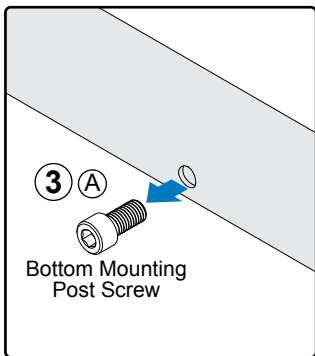


NOTE: Handle shown from side.



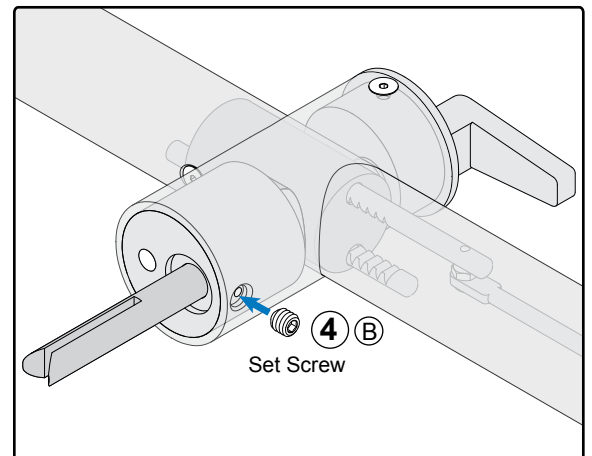
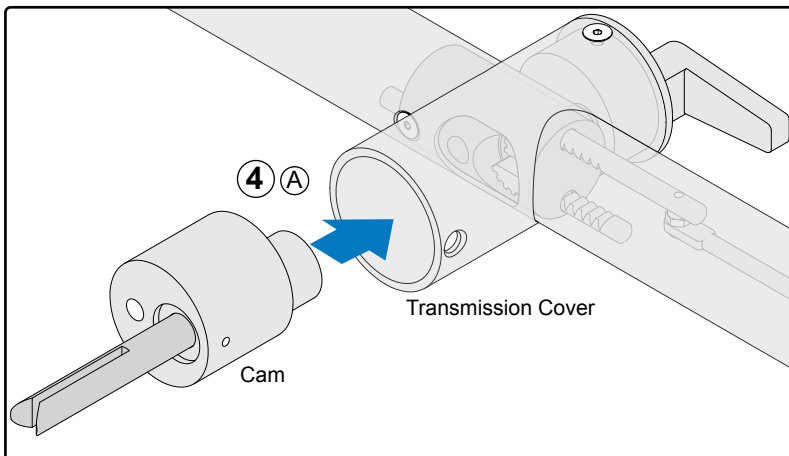
Install Bottom Mounting Post

- ③ Remove Bottom Mounting Post Screw and use it to install Bottom Mounting Post.



Install Cam

- ④ Fit Cam into Transmission Cover and Gear Holder. Secure with set screw.

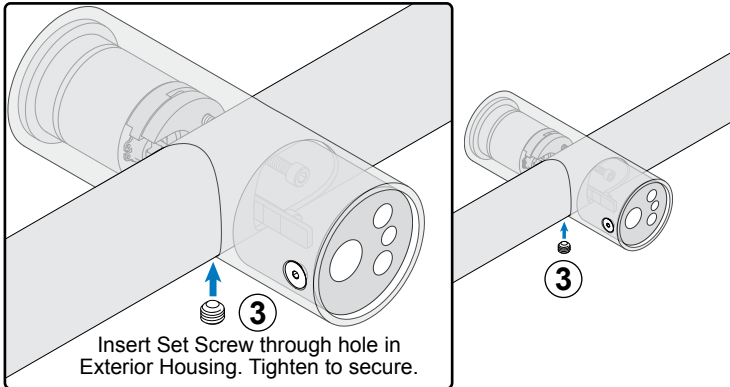
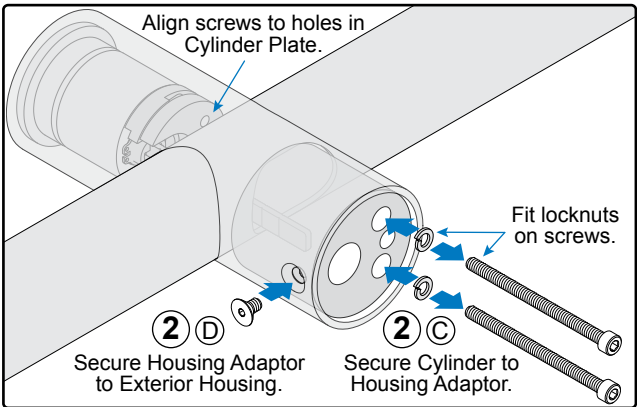
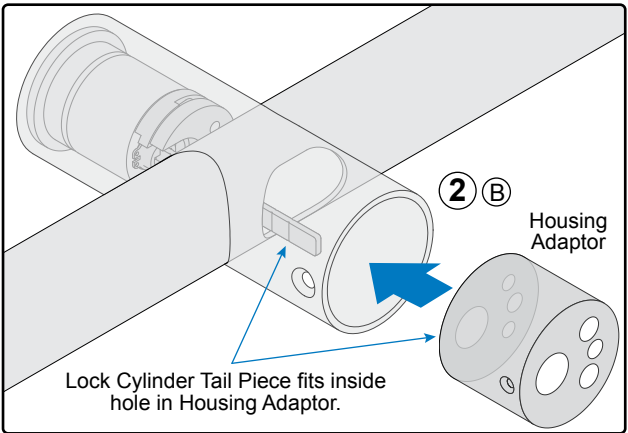
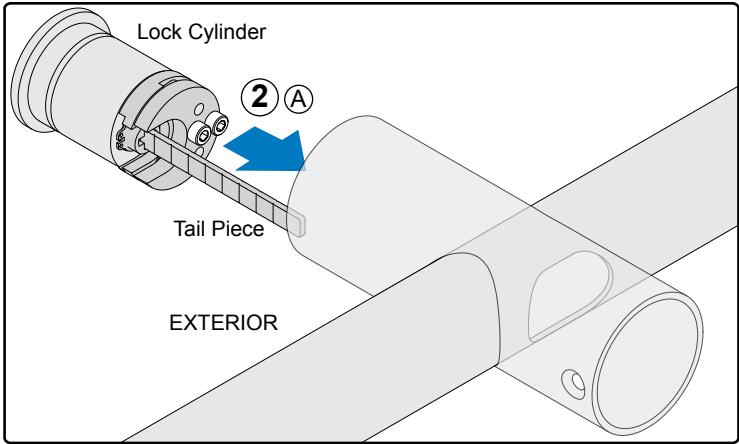
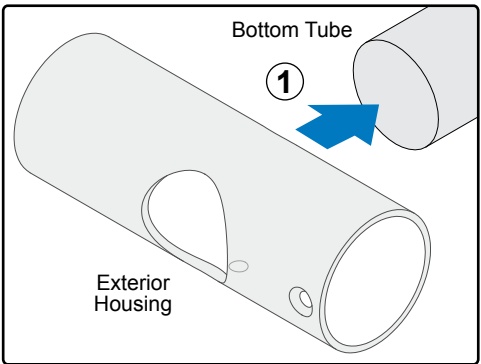


ASSEMBLE EXTERNAL HANDLE

Install Lock Cylinder

- ① Slide Exterior Housing onto tube from bottom and align at cutout.
- ② Install Lock Cylinder at exterior and Housing Adaptor at interior.
- ③ Secure External Housing to tube.

NOTE: Handle shown from side.



Install Bottom Mounting Post

- ④ Align Bottom Mounting Post and secure.

